



**AlmaWin**  
NATURAL CLEANLINESS

**Klar**  
*EcoSensitive*

WITHOUT SCENT

# IN HARMONY WITH HUMAN & NATURE

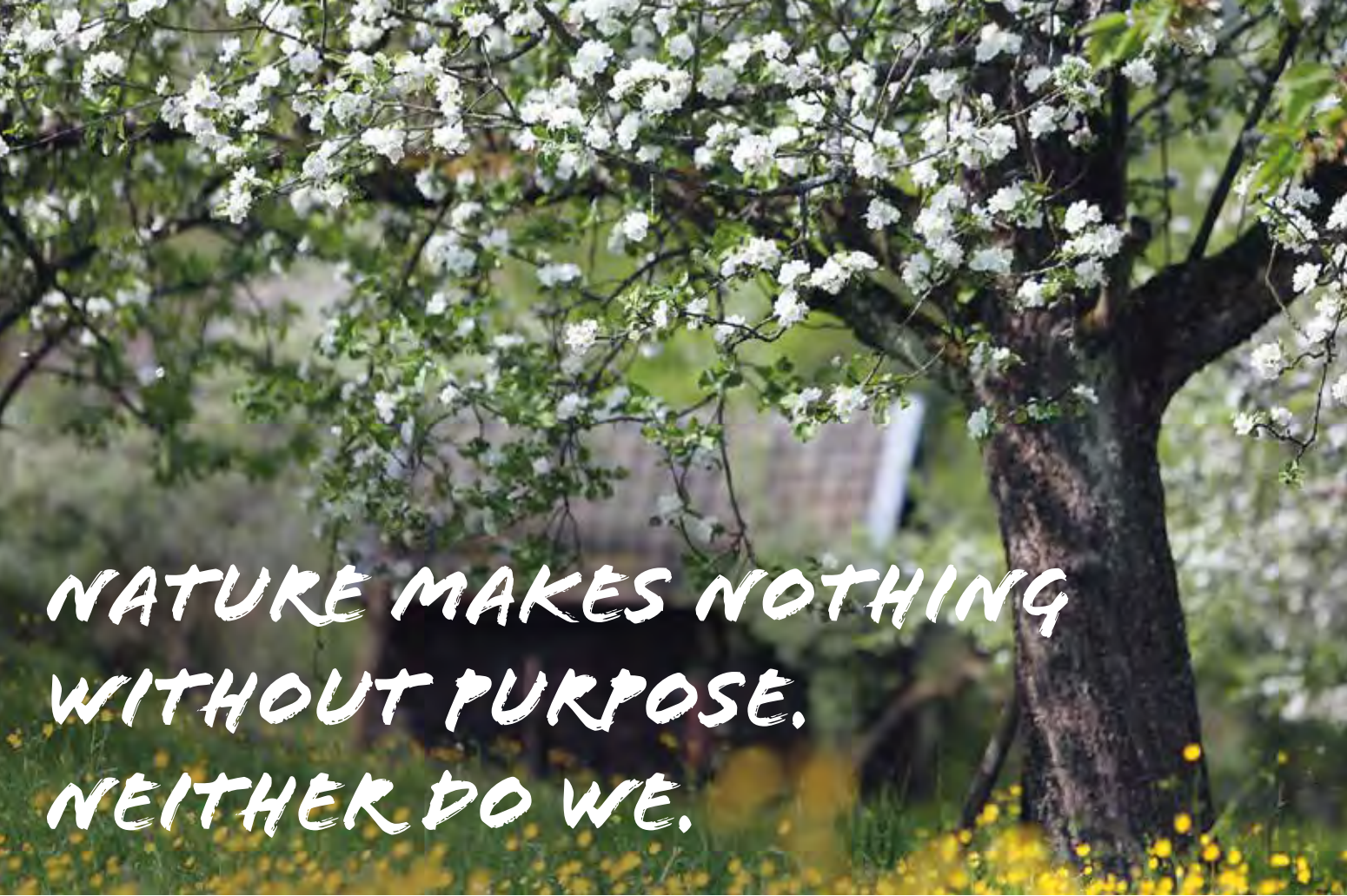
Ecological washing & cleaning detergents



**MADE IN  
GERMANY**







NATURE MAKES NOTHING  
WITHOUT PURPOSE.  
NEITHER DO WE.

Surrounded by lush green meadows, orchards full of apples, and vineyards making some of the best wines in Germany. There could be no better location for our company than the idyllic village Winterbach in southern Germany! In the midst of nature, AlmaWin has been producing ecologically certified, skin-sensitive washing and cleaning products since 1993. Inspired by the lush green that surrounds us, we strive for sustainability in all steps of production, starting from the careful selection of plant- and mineral-based ingredients and ending with eco-friendly packaging. Loved by our customers, we now sell over 60 products in over 35 global markets.

We at AlmaWin strive to protect both our planet and our health, especially the skin, while at the same time providing the best cleaning for safe, effective and lasting results that support your needs. Always treating our planet with respect, we constantly innovate and improve our products and packaging. This makes our products tough on stains and dirt, helping you keep your house – and the earth – clean.

## SOWING TOGETHER FOR MORE BIODIVERSITY!

Intensive agricultural use and urban densification – these are just two of the buzzwords of today that lead to insect mortality and massive loss of biodiversity. In cities, the number of flowering areas, become fewer and fewer. In the countryside monocultures with intensive use of fertilizers and pesticides are common. Our insects are the basis for a functioning and balanced ecosystem. Nevertheless, their diversity and their continued existence are massively threatened:

Here we become active and would like to give an impulse for each of us to become active ourselves.

With the project "Nützlingsweide" and "Schmetterlingsweide" 3000 square meters of fallow land have already been turned into flowering pastures. This biotope blooms from June to October and offers a valuable year-round food source for bumblebees, butterflies, ladybugs, and Co.

Whether in a flower pot on the balcony or in the home garden: Everyone can do something! That's why, as part of our campaign for more biodiversity, we have so far given away 50,000 packets of seed-resistant organic seeds for your own insect paradise at home.





# FEEL THE CLEANLINESS!

For over 25 years, our aim has been to protect your skin as well as the environment – while, at the same time, providing detergents with maximum cleaning power. We not only promote sustainable lifestyles among our customers, but also pursue sustainability in every single step of production. Our promise to you: we at AlmaWin pursue a genuine, whole-hearted approach to saving the planet.

- **ZERO** synthetic fragrances, colourants and preservatives
- **ZERO** nanotechnology
- **ZERO** phosphate, chlorine and optical brighteners
- **ZERO** microplastic



- natural fragrances and plant-/mineral-based ingredients
- highly efficient, environmentally-friendly concentrates
- durationally tested (verdict: very good)
- bottles from recycled plastic
- vegan
- ecologically certified quality
- Made in Germany

# TWO BRANDS, ONE PHILOSOPHY!



**WITH PURE NATURAL FRAGRANCES**  
Naturally clean and fragrant fresh.



**WITHOUT FRAGRANCE FOR SKIN SENSITIVE PEOPLE**  
Smells so clean, even without fragrance.



## TESTED AND CERTIFIED: AWARD-WINNING QUALITY!

All our products are awarded with the most rigid international ecological labels, such as Ecocert and Ecogarantie. Our products regularly receive accolades from independent testing institutions and organisations, such as leading Germany quality test magazine Ökotest. This shows that being soft to the planet goes hand in hand with being tough on dirt! What our certifications guarantee:



### Ecogarantie®

- natural (plant- and mineral-based) ingredients, whenever possible from certified organic farming
- no petrochemicals
- no GMOs, no testing on animals
- sustainable production
- 100 % biodegradable



### ECOCERT Greenlife

- natural (plant- and mineral-based) ingredients
- no GMOs, no nanotechnology
- no synthetic fragrances and colourants
- sustainable production



### VEGAN SOCIETY

- supports and promotes vegan lifestyle
- protects the wellbeing of humans and animals

Ecogarantie®: Product certified by Certisys. sprl, [www.ecogarantie.eu](http://www.ecogarantie.eu)



### Sustainability:

We've been awarded the Green Brands label since 2013, highlighting our successful approach to sustainability and our outstanding effort to preserve our natural resources and protect the climate.



### Climate neutral company:

To compensate the unavoidable CO<sub>2</sub> emissions, AlmaWin supports in cooperation with Fokus Zukunft, climate protection projects in Uganda, Tanzania and Uruguay.



**Protecting our skin:** All our products have been successfully tested by independent organisations certifying their outstanding dermatological properties.



### Quality and environment management:

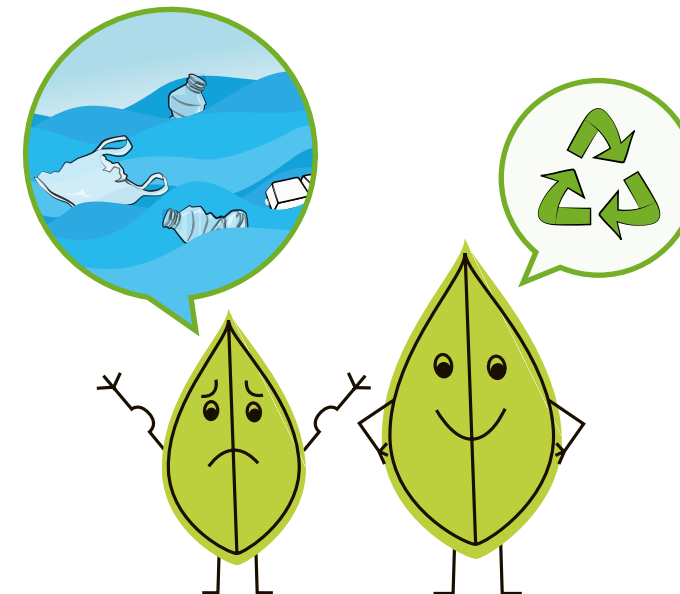
We have been repeatedly awarded the certifications DIN ISO 9001 and DIN ISO 14001 since 2015.

## WE NEED MORE ENVIRONMENTAL HEROES!

**More recycling, less plastic waste is our mission. That's why we started our 'environmental heroes' project.**

More recycling, less plastic waste is our mission. That's why we started our 'environmental heroes' project. Our 'environmental heroes' symbolised by a smiling green leaf character, are bottles made from post consumer recycled (PCR) plastic. This helps us save heaps of plastic as there's already enough of it on our planet. For us, plastic waste is not garbage, but a resource out of which we make the new bottles for our detergents. Thus, all our PE and PET bottles are made from 100 % PCR plastic that has been collected from the waste recycling system. In other words, your old yoghurt cup might have become your AlmaWin dish soap bottle! Isn't that amazing?

**With lots of pride we can say that our bottles are the real 'environmental heroes'.**



### Recycling is simple!



The recycling system is simple-post consumer plastics, like your old yoghurt pod, is shredded to granulate, which then is melted and shaped into new goods, like our AlmaWin bottles. Since our bottles are all recyclable, this also means that your old AlmaWin bottle might become your new AlmaWin bottle! Recycling old plastic packaging is similar to recycling glass bottles or paper. As it's a closed cycle that can be repeated endlessly, we make sure we don't waste any valuable resources.





# SOAPNUT: 100 % NATURAL, 100 % CLEAN

The soapnut could as well just be called ‘magic nut’ as it does little wonders to your clothes.

## Our little round hero

- gets your clothes squeaky clean without enzymes and surfactants
- protects your textiles’ fibres and colours
- makes your clothes snuggly soft
- reduces wrinkles in your clothes, helping you save heaps of time on ironing

What’s the secret behind all this? It’s the soapnut’s natural saponin. Due to the wash active substances/ properties of the saponin, the detergent is not only 100 % biodegradable, but also needs no enzymes and fewer natural surfactants and soap. This makes it especially gentle on the skin and the environment. As the soapnut’s power is released already at 20 °C, it helps you save energy while protecting your clothes colours and fibres.

We have realized the soapnut’s huge ecological and dermatological potential already in 2006. AlmaWin was the first to produce an ecologically certified washing detergent on the basis of soapnuts. For 15 years, we have successfully produced and innovated our soapnut detergents and now offer five different KLAR products (including a foamy hand soap) with natural soapnut extract.



Founder and CEO Rudolf Bund meeting our long-standing partners in India.

WATCH OUT  
FOR OUR  
'ENVIRONMENTAL  
HERO'  
CHARACTER!

Whenever you spot our green leaf character in this catalogue you know the bottle is 100 % from recycled plastic or that we use packaging produced with much fewer resources.

|  |                        |         |
|--|------------------------|---------|
|  | WASHING DETERGENTS     | PAGE 10 |
|  | SPECIAL PRODUCTS       | PAGE 20 |
|  | CLEANING AGENTS        | PAGE 25 |
|  | DISHWASHING DETERGENTS | PAGE 30 |
|  | SOAPS                  | PAGE 35 |
|  | ADDITIONAL PRODUCTS    | PAGE 36 |



## WASHING DETERGENTS



### LIQUID DETERGENT

Our AlmaWin Liquid Detergent not only makes your clothes wonderfully clean, but also leaves a subtle fragrance of fresh lavender. **To protect the sensitive skin of your whole family, it does not contain any enzymes.** The environmental-friendly eco pack reduces plastic use by 75 %.

#### Application:

- Suitable for white and coloured fabrics (natural, mixed and synthetic fibres, such as cotton, acrylic, hemp and viscose)
- 1,5 l are sufficient for 23 loads
- Also suitable for hand wash
- We recommend using the cotton or coloureds programme of your machine

**Note:** Not suitable for wool and silk

**Temperature range:** 30 °C to 95 °C

**Fragrance:** Fresh lavender

**Good to know:** Add AlmaWin oxygen bleach for even better results for your white fabrics

| Available sizes | 65 ml   | 750 ml  | Ecopack 1.5 l | 20 l    |
|-----------------|---------|---------|---------------|---------|
| Item no.        | 8001999 | 8001750 | 8001001       | 8001020 |



### SOAPNUT LIQUID

Our KLAR Universal Washing Detergent Soapnut with its outstanding natural cleaning properties is soft to your textiles' colours, thus making it suitable not only for whites, but also for coloureds. The soapnut's saponin acts also as fabric softener, making your clothes snuggly soft and easy to iron. It comes in an **environmental-friendly eco pack** that helps you save 75 % plastic! Due to the great cleaning properties of the soapnut, this liquid detergent does not contain any enzymes, thus reducing the risk of skin irritations.

#### Application:

- For white, coloured and dark natural, mixed and synthetic fibres.
- 1,5 l are sufficient for 33 loads.
- Also suitable for hand wash.
- We recommend using your machine's cotton cycle, or the delicate programme for delicates.

**Note:** Not suitable for wool and silk.

**Temperature range:** 20 °C to 95 °C

**Good to know:** Add KLAR Stain Remover for even brighter results. It helps your textiles retain their brilliant whiteness.

| Available sizes | 45 ml   | 750 ml  | Ecopack 1.5 l |
|-----------------|---------|---------|---------------|
| Item no.        | 6603999 | 6603750 | 6603002       |



## WASHING DETERGENTS



### LIQUID DETERGENT COLOR

AlmaWin Liquid Detergent COLOR provides deep cleaning while retaining the radiance of your coloured clothes. To protect the sensitive skin of your whole family, it does not contain any enzymes. Now also available as environmental-friendly eco pack, we have reduced plastic packaging by 75 %.

#### Application:

- For natural, mixed and synthetic fibres
- 1,5 l are sufficient for 20 loads
- Also suitable for hand wash
- We recommend using your machine's colour cycle (if applicable), or the delicate programme for delicates

**Note:** Not suitable for wool and silk

**Temperature range:** 30 °C to 60 °C

**Fragrance:** Floral lime blossom

| Available sizes | 750 ml  | Ecopack 1.5 l | 5 l     | 20 l    |
|-----------------|---------|---------------|---------|---------|
| Item no.        | 8008750 | 8008001       | 8008005 | 8008020 |



### LIQUID DETERGENT COLOR

Make KLAR Liquid Detergent COLOR your little helper against discolorations, retaining your textiles' vivid colors. Due to our gentle formula without enzymes, the fibres are protected so that your clothes look new longer! In an effort to reduce plastic waste, KLAR Color Detergent comes in 1.5 l **ecopacks that are made from 75 % less plastic.**

#### Application:

- For natural, mixed and synthetic fibres
- 1.5 l are sufficient for 25 loads
- Also suitable for hand wash
- We recommend using your machine's coloured or delicates cycle

**Note:** Not suitable for wool and silk

**Temperature range:** 30 °C to 60 °C

| Available sizes | 45 ml   | 750 ml  | Ecopack 1.5 l | 10 l    |
|-----------------|---------|---------|---------------|---------|
| Item no.        | 6602999 | 6602700 | 6602003       | 6602010 |
|                 | 20 l    |         |               |         |
|                 | 6602020 |         |               |         |







## WASHING DETERGENTS



LAVENDER



### WASHING POWDER HEAVY DUTY DETERGENT

AlmaWin Washing Powder stands out for its **great results, even at 30 °C**. Its secret is active oxygen, which removes even the toughest stains and keeps your laundry white. Our washing powder contains GMO-free natural enzymes, as well as rice starch for a better grip and easier ironing.

#### Application:

- For whites and colourfast fabrics made from any natural, mixed and synthetic fibres
- 2 kg last for 36 loads
- Also suitable for hand wash
- We recommend using the cotton or coloureds programme of your machine

**Note:** Not suitable for wool and silk

**Temperature range:** 30 °C to 95 °C

**Fragrance:** Fresh lavender

| Available sizes | 1.080 kg | 2 kg    | 4.6 kg  | 25 kg   |
|-----------------|----------|---------|---------|---------|
| Item no.        | 3290111  | 3290102 | 3290104 | 3290125 |



WITHOUT SCENT



### UNIVERSAL WASHING POWDER

KLAR Heavy-duty Washing Powder with natural soap nut extract gets your whites **sparkling clean, even at low temperatures (30 °C)**. As the active oxygen is activated with water, our washing powder removes even the toughest stains and keeps the textiles' white brilliance. The rice starch in our formula provides a nice grip to your clothes and makes ironing easier and faster. Due to the great cleaning properties of the soap nut, our washing powder does not contain any enzymes, thus reducing the risk of skin irritations.

#### Application:

- For white and colourfast natural, mixed and synthetic fibres
- 2.475 kg are sufficient for 45 loads
- Also suitable for hand wash
- We recommend using your machine's cotton or coloured cycle

**Note:** Contains oxygen bleach  
Not suitable for wool and silk

**Temperature range:** 30 °C to 95 °C

| Available sizes | 1.1 kg  | 2.475 kg | 4.4 kg  |
|-----------------|---------|----------|---------|
| Item no.        | 6601001 | 6601002  | 6601004 |



## WASHING DETERGENTS



LIME BLOSSOM



### COLOR WASHING POWDER

AlmaWin Washing Powder COLOR stands out for its **superb results, even at low temperatures (30 °C)**. It protects your clothes' radiant colors while being gentle on the fibres. It contains GMO-free natural enzymes as well as rice starch for a better grip and easier ironing.

#### Application:

- For natural, mixed and synthetic fibres
- 2 kg are sufficient for 64 loads
- Also suitable for hand washing
- We recommend using your machine's colored programme, or the delicate programme for delicates.

**Note:** Not suitable for wool and silk

**Temperature range:** 30 °C to 60 °C

**Fragrance:** Floral lime blossom

| Available sizes | 1 kg    | 2 kg    | 10 kg   |
|-----------------|---------|---------|---------|
| Item no.        | 8009001 | 8009002 | 8009010 |



WITHOUT SCENT

### WASHING POWDER COLOR

Our powder detergent without enzymes gives your clothes a deep clean while being gentle on their fibres and colours. The natural soap nut extract protects your clothes from losing their radiant colours while the powder's rice starch gives them a nice grip, making ironing easier – and get you better results!

#### Application:

- For natural, mixed and synthetic fibres
- 1.375 kg are sufficient for 27 loads
- Also suitable for hand wash
- We recommend using your machine's coloured or delicates cycle

**Note:** Not suitable for wool and silk

**Temperature range:** 30 °C to 60 °C

| Available sizes | 1.375 kg | 4.750 kg |
|-----------------|----------|----------|
| Item no.        | 6626001  | 6626007  |





## WASHING DETERGENTS

WITHOUT SCENT



### WATER SOFTENER

Have you ever wondered why your laundry often doesn't get as clean as you want it to? The answer might be that you live in an area with hard (calcium carbonate-rich) water. Hard water contains minerals that reduce your detergent's effectiveness. Adding our KLAR Water Softener to your laundry **helps you get cleaner laundry** while at the same time enhancing your washing machine's lifespan/protecting your washing machine.

#### Application:

Frequently add to your laundry if you live in an area with water hardness level III (14–21°dH) and above.

**Hint:** Don't know your water's hardness level? Enquire with your local waterworks or city administration.

|                 |         |         |
|-----------------|---------|---------|
| Available sizes | 325 g   | 2.4 kg  |
| Item no.        | 6605275 | 6605002 |



LAVENDER



### WOOL & SILK LIQUID DETERGENT

The combination of washing-active substances from renewable raw materials and plant-based refatting agents in our Wool & Silk detergent is particularly soft to your skin, textiles and the environment. Wheat proteins furthermore protect your clothes' delicate natural fibres, while the absence of soap is good for the environment and your textiles. With 750 ml being sufficient for 50 loads, this product is **highly efficient**, making it very economical and environment-friendly.

#### Application:

- For natural fibres such as wool, silk, hemp as well as machine-washable down textiles and lambskin
- 750 ml are sufficient for 50 loads
- Also suitable for hand wash
- We recommend using the delicate programme for delicates, and the wool programme for wool (if applicable)

Temperature range: 20 °C to 40 °C

**Note:** For delicates we recommend using your machine's wool cycle, at temperatures between cold and 40 °C

Fragrance: Fresh lavender

|                |         |
|----------------|---------|
| Available size | 750 ml  |
| Item no.       | 8002750 |



## WASHING DETERGENTS

WITHOUT SCENT



### FINE FABRIC & WOOL LIQUID DETERGENT

Our KLAR Delicates & Wool detergent is particularly soft to your skin, textiles, and the environment. Containing **no enzymes and soap**, but wheat protein that protect your clothes' delicate natural fibres, our detergent retains your wool, silk and down clothes' shape and gentle touch. With 500 ml being sufficient for 50 loads, our little bottle can do real wonders for months!

#### Application:

- For natural fibres such as wool, silk, and machine-washable down textiles as well as for delicate clothes like lingerie
- 500 ml are sufficient for 50 loads
- Also suitable for hand wash
- We recommend using the delicates, wool or handwash programme (if applicable)

Temperature range: 20 °C to 40 °C

|                |         |
|----------------|---------|
| Available size | 500 ml  |
| Item no.       | 6604500 |



LAVENDER



### SPORT & OUTDOOR LIQUID DETERGENT

AlmaWin Sport & Outdoor detergent does not only wash your sports clothes deep clean, but also **removes sweat and other unpleasant odours**. It also can be used to wash textiles that are used for pets and animals, such as dog and horse blankets. It is free of soap and does not contain any enzymes to protect your functional textiles' properties, including their waterproofing.

#### Application:

- For all microfibres, membranes, mixed fibres and cottons
- 750 ml are sufficient for 16 loads
- We recommend using your machine's programme for sports textiles or delicates (if applicable)

#### Note:

- Do not add other detergents, softeners or additional products
- Not suitable for wool and silk

Temperature range: 20° to 40°C

Fragrance: Fresh lavender

|                 |         |         |
|-----------------|---------|---------|
| Available sizes | 45 ml   | 750 ml  |
| Item no.        | 8007999 | 8007750 |







## WASHING DETERGENTS



### LIQUID LAUNDRY DARK AND BLACK

Our detergent for dark and black fabrics is particularly soft, protecting your dark textiles' fibres and colours to retain their colour. Its special formula also **prevents any detergent residues** on your clothes. Due to the use of soap nuts, it does not contain any enzymes.

#### Application:

- For dark and black textiles (natural, mixed and synthetic fibres)
- 750 ml are sufficient for 25 loads
- Also suitable for hand wash
- We recommend using your machine's delicate cycle

**Note:** Not suitable for wool and silk

**Temperature range:** 20 °C to 60 °C

**Fragrance:** Refreshing verbena

|                 |         |         |
|-----------------|---------|---------|
| Available sizes | 45 ml   | 750 ml  |
| Item no.        | 8000999 | 8000750 |



### CLEANUT „PALMOIL FREE“ LIQUID DETERGENT

AlmaWin Liquid Detergent Cleanut Palmoil Free for coloureds and delicates is free from palmoil and palm kernel oil as it uses the **soapnuts' naturally-occurring saponin** as enzyme. **Saponin boosts the detergent's efficacy** while also protecting fibres and colours. It furthermore gives your clothes a soft touch and reduces wrinkles, making ironing much easier and faster.

#### Application:

- For all natural, mixed and synthetic fibres
- 750 ml are sufficient for 25 loads
- Also suitable for hand wash
- We recommend using your machine's delicates or coloureds programme

**Note:** Not suitable for wool and silk

**Temperature range:** 20 °C to 60°C

**Fragrance:** Refreshing verbena

|                 |         |         |
|-----------------|---------|---------|
| Available sizes | 45 ml   | 750 ml  |
| Item no.        | 8004999 | 8004750 |



## WASHING DETERGENTS



### FABRIC SOFTENER

Our AlmaWin lavender and orange blossom fabric softeners are made entirely from plant-based ingredients. This ensures **cuddly soft laundry** and an all-round good skin feeling. The natural essential oils from certified organic farming furthermore pampers you with a pleasant natural scent.

#### Application:

- Can be used in combination with any AlmaWin detergent, apart from Sports & Outdoor
- Also suitable for hand wash

**Note:** Not suitable for functional textiles

**Fragrance:** Refreshing lavender or floral orange blossom

|                                |         |         |
|--------------------------------|---------|---------|
| Available sizes Lavender       | 750 ml  |         |
| Item no.                       | 8003750 |         |
| Available sizes Orange Blossom | 100 ml  | 750 ml  |
| Item no.                       | 8013100 | 8013750 |



### KLAR FABRIC SOFTENER

KLAR fabric softener is entirely plant based and without fragrance. This guarantees **cuddly soft, gorgeous laundry** and an all-round good skin feeling. It also makes it particularly suitable for babies or people with sensitive skin and allergies. Being hypo-allergenic, it helps reduce your risk of skin irritations and other possible allergic reactions.

#### Application:

- Can be used in combination with any KLAR detergent
- 750 ml is sufficient for 30 loads
- Also suitable for hand wash

**Note:** Not suitable for functional textiles

|                 |         |
|-----------------|---------|
| Available sizes | 750 ml  |
| Item no.        | 6628750 |





## WASHING DETERGENTS



### NATURAL LAUNDRY SCENTS

Heavenly fresh and scented laundry without any synthetic fragrances or preservatives. With its gentle formulation and the pure natural fragrance blend of lime blossom extract or verbena extract and eucalyptus oil from controlled organic farming, the natural fragrance additive creates a pleasant fresh feeling of heavenly scented laundry. An indulgent experience, even for people with sensitive skin or noses.

#### Application:

- Can be used with any AlmaWin washing detergents
- Put our organic textile fragrance in your machine's drawer for laundry softener
- 750 ml are sufficient for 50 loads

**Fragrance:** Floral lime blossoms or refreshing verbena

|                                    |         |         |
|------------------------------------|---------|---------|
| Available sizes                    |         | 750 ml  |
| Natural laundry scent Verbena      |         |         |
| Item no.                           |         | 8005750 |
| Available sizes                    | 100 ml  | 750 ml  |
| Natural laundry scent Lime Blossom |         |         |
| Item no.                           | 8010100 | 8010750 |



### OXYGEN BLEACH

With the power of active oxygen, AlmaWin Oxygen Bleach does not only make your clothes, dishes and surfaces clean, but also hygienic. It also removes odours, such as from stinky drains, smelly dishwashers and washing machines. It can also be used as pre-treatment to remove stains locally and already works at 30 °C.

**Application in your washing machine:** Washing booster, stain remover and bleaching agent

**Application in your dishwasher:** For dishes discoloration

**Application in your household:** For drain odor

**Good to know:** AlmaWin active bleach is anti-bacterial at 70+ °C.

|                 |         |         |
|-----------------|---------|---------|
| Available sizes | 400 g   | 2.5 kg  |
| Item no.        | 8006400 | 8006002 |



### STAIN REMOVER

The Klar stain remover ensures cleanliness and hygiene throughout the household. Whether as a stain remover, washing power booster, bleaching agent or odor remover: Klar Stain Remover works, and does so at temperatures as low as 30 °C. Klar Stain Remover is a building block of the Klar laundry building kit.

**Application in your washing machine:** Washing booster, stain remover and bleaching agent

**Application in your dishwasher:** For dishes discoloration

**Application in your household:** For drain odor

**Good to know:** Klar stain remover is anti-bacterial at 70+ °C.

|                 |         |         |
|-----------------|---------|---------|
| Available sizes | 400 g   | 4 kg    |
| Item no.        | 6606400 | 6606004 |



## WASHING DETERGENTS



### GALL SOAP

Gall Soap is known for its **powerful cleaning properties** and has been used in Germany for centuries. The naturally occurring enzymes in the cow's gall let you remove even fat and protein.

**Application:** To pre-treat or remove stubborn stains including those from fruit, juice, blood, fat, chocolate and grass

**Note:** Check your clothes' colourfast properties at an unnoticeable area before application. Not suitable for wool and silk.

|                |         |
|----------------|---------|
| Available size | 100 g   |
| Item no.       | 8036100 |



### GALL SOAP LIQUID

Making stain removing with gall soap even better and easier, our KLAR Organic Gall Soap comes in liquid form, in a bottle **with in-built brush** for easy application and **deep cleaning**. The naturally occurring enzymes in the cow's gall let you remove even fat and protein.

**Application:** To pre-treat or remove stubborn stains including those from fruit, juice, blood, fat, chocolate and grass on white and colourfast textiles.

**Note:** Check your clothes' colourfast properties at an unnoticeable area before application. Not suitable for wool and silk.

|                |         |
|----------------|---------|
| Available size | 250 ml  |
| Item no.       | 6607250 |







### ORANGE OIL CLEANER

Our orange oil cleaner **gets (nearly) every job done!** It is extremely tough on all kinds of stains, dirt, grime, and smells. It helps your house look radiant while leaving a **wonderfully fresh scent of natural oranges**. Highly concentrated and efficient, it helps you combat all kinds of dirt at home and in the garage.

#### Application:

- Suitable for the vast majority of waterproof surfaces
- Removes burn stains on pans and pots, paints, varnishes, adhesives, grease, resins etc.
- Eliminates odours
- Use as dilution to combat normal dirt
- Use concentrated (non-diluted) for especially tough tasks

#### Note:

- Always test material compatibility on a non-visible part before usage
- Do not use on acrylic surfaces and painted surfaces
- Only use on white and colourfast textiles
- Leaving the concentrated solution on your stains for several minutes (depending on the toughness of your cleaning task) can improve the results

**Fragrance:** Wonderfully fresh orange scent

|                |         |
|----------------|---------|
| Available size | 500 ml  |
| Item no.       | 8035500 |



### ORANGE OIL CLEANER 'EXTRA STRONG'

AlmaWin Orange Oil Cleaner 'Extra Strong' is the answer to the most difficult cleaning jobs. With the power of the orange peel, it **removes stains and dirt fast and with ease**. In addition to combatting grease and grime around the house, you can also use it to remove labels and stickers, as well as chewing gum, resin and much more. Apart from getting the job done, our orange oil cleaner also leaves a **wonderfully fresh scent of oranges** in your house. Due to its highly concentrated formula, even minimal dosage gets maximum results – and your bottle lasts for months!

#### Application:

- Suitable for the vast majority of waterproof surfaces
- Removes burn stains on pans and pots, paints, varnishes, adhesives, grease, resins etc.
- Eliminates odours
- Use as dilution to combat normal dirt
- Use concentrated (non-diluted) for especially tough tasks

#### Note:

- Always test material compatibility on a non-visible part before usage
- Do not use on acrylic surfaces (plexiglass) and varnished surfaces
- Only use on white and colorfast textiles

**Fragrance:** Wonderfully fresh orange scent

|                 |         |         |
|-----------------|---------|---------|
| Available sizes | 125 m   | 500 ml  |
| Item no.        | 8038125 | 8038500 |



### ECO SPONGE 'MAGIC OF DREAMS'

Equipped with three layers, our sponge combines three powers: the stainless-steel wool layer efficiently removes stubborn grime and baked-on leftovers with soap nut detergent (hidden in your sponge and released under pressure!). The middle layer (certified under eco-tex and made to over 70% from natural sunflower oil) quickly soaks in and retains excess liquids. The outer layer made of cotton fleece gently cleans and wipes delicate surfaces such as glass, keeping their surface sparkling clean.

#### Application:

- Ideal for cleaning pots and pans as well as your sink! The cotton fleece layer gently cleans glasses, chinaware and cutlery
- Removes even the toughest stains, such as baked-in and burnt-in food leftovers from pots, pans, ovenproof dishes and bakingtrays
- Removes spilt-over (and burnt-in) food from your hob
- Also suitable for car rims, fireplace panes, BBQ grill grates, garden furniture and much more!

**Note:** Always test material compatibility on a non-visible part before usage

**Good to know:** Use your sponge even when the soap is gone! You can easily refill your magic sponge by rubbing our wet AlmaWin soap bar (see page 35) on the steel wool layer.

|                |          |
|----------------|----------|
| Available size | 2 pieces |
| Item no.       | 8037001  |





### DISHWASHER AND WASHING MACHINE CLEANER

Our Cleaner helps you to easily remove dirt, grime and lime scale from the hard-to-reach places of your dishwasher and washing machine. As it eliminates odours too, our cleaner makes sure both your clothes and machine are not only clean, but also hygienic.

**Application in the dishwasher:**

Pour the content of a sachet of our dishwasher and washing machine cleaner in the drawer compartment of your dishwasher. Run a complete cycle at highest temperature, without any dishes inside.

**Application in the washing machine:**

Depending on the purpose and frequency, pour either two sachets (deep cleaning) or one sachet (regular maintenance) in the detergent drawer of your machine. Run a full cycle at maximum temperature without any clothing.

**Note:** Please follow the producer's instructions of your dishwasher and washing machine

**Tipp:** Using our dishwasher and washing machine cleaner in regular intervals helps you not only keep them clean, but also increases the lifespan of your appliances.

|                 |           |
|-----------------|-----------|
| Available sizes | 2 x 100 g |
| Item no.        | 0190200   |



### LIME REMOVING LIQUID

Annoyed by too low water pressure in your shower? Lime deposits in your shower head can take the fun out of your morning shower. Descaling your bathroom appliances and tap regularly helps you combat lime deposits. And when you already have the descaler in your bathroom, use it to remove nasty urine deposits and lime from your toilet bowl, too – effortless, without scrubbing!

Despite being made from purely natural ingredients, our descaler beats even the toughest deposits in only minutes, without any unpleasant, unhealthy chemical smells.

**Application:**

- For an efficient and easy removal of lime deposits from surfaces and home appliances such as kettles, coffee machines, washing machines, dishwashers and pots. Use diluted with (hot) water and let soak for some minutes.
- Can also be used to remove nasty lime deposits in your bathroom, such as from fittings, shower heads and the bathtub, but also from urinals and toilet bowls.

**Note:** Do not use on marble, terrazzo, eloxal and enamel

|                |         |
|----------------|---------|
| Available size | 500 ml  |
| Item no.       | 6612500 |



### LIME REMOVING POWDER

Lime deposits in your kettle can not only ruin your tea, but also your kettle. Lime can not only lead to an early breakage of electronics (including your expensive coffee maker!), but also increases your appliances' energy consumption.

Our Organic Descaler helps you get surfaces and appliances lime-free in seconds, with purely natural ingredients like citric acid. This also helps you combat dirt and bacteria, which often stick to lime deposits. Next time you see lime in your toothbrush mug, grab our descaler for hygienic, chemical-free results!

**Application:** For an efficient and easy removal of lime deposits from surfaces and home appliances such as kettles, coffee machines, washing machines, dishwashers and pots. Use diluted with water and let it soak for some minutes.

**Note:** Do not use on marble, terrazzo, eloxal and enamel

**Good to know:** For stubborn lime deposits, repeat the process

|                |         |
|----------------|---------|
| Available size | 280 g   |
| Item no.       | 6613280 |







## SPECIAL PRODUCTS



### BABY BOTTLE CLEANER

Our **AlmaWin** and **Klar** baby bottle cleaner removes milk, milk fat, juice and food from baby's milk bottles, pacifiers, plates and washable toys. The special formula is soft on the materials while ensuring that everything is thoroughly cleaned. It even removes stubborn milk fat that other detergents often fail to clean properly without harming your baby and the environment.

**Application:** Use to clean bottles made from PES, glass, PP or PA

**Note:** Without colourants, fragrances and preservatives – protect your baby by using our gentle milk bottle cleaner!

|                |         |
|----------------|---------|
| Available size | 500 ml  |
| Item no.       | 8023500 |



WITHOUT SCENT

### DESINFECTANT SPRAY

Our **KLAR** Antibacterial Spray removes bacteria, viruses (including COVID-19/SARS-CoV-2) and fungi in seconds! Our sanitizer shows that impressive results don't need any chemicals, also not in disinfectants. Stay healthy and beat all the nasty bacteria and viruses with our simple-to-use spray.

**KLAR** Antibacterial Spray is our solution to combatting the following from surfaces and appliances in your household, the office, and on the move:

**Effective against:**

- Salmonella, pseudomonads, staphylococci, coli bacteria)
- Viruses (influenza viruses, e.g. SARS-CoV-2, bird flu, SARS, swine flu and hepatitis, HIV, herpes simplex)
- Fungi (Candida albicans)

**Application:**

- Spray on plastic (apart from acrylic), glass, porcelain and ceramic surfaces for hygienic results.
- Quickly and thoroughly disinfects door hobs, toilet lids, toilet seats, cutting boards, sinks, office desks and supermarket trolleys.

**Note:** Use biocidal products carefully. Always read the label and product information before use.

|                |         |
|----------------|---------|
| Available size | 250 ml  |
| Item no.       | 6627250 |



## CLEANING AGENTS



PEPPERMINT

### BATHROOM CLEANER

With the power of natural essential oil from invigorating mint, our bathroom cleaner gets your whole bathroom and toilet neat and shiny. Citric acid and lactic acid are your powerful accomplices in the fight against lime, dirt and soap residues, leaving your sink, fittings and surfaces radiant and water-repellent.

**Application:**

Suitable for all acid-resistant surfaces in the bathroom such as sinks, toilet bowls, bathtubs, showers, fittings and shower heads, among others.

**Note:**

- Do not use it on marble, limestone, anodized aluminium or other surfaces that can be damaged by acids
- We recommend using gloves while cleaning

**Fragrance:** Invigorating mint

|                 |         |                    |         |
|-----------------|---------|--------------------|---------|
| Available sizes | 500 ml  | Refill Pack 500 ml | 20 l    |
| Item no.        | 8032500 | 8032499            | 8032020 |



WITHOUT SCENT

### BATHROOM CLEANER

Our bathroom cleaner gets your whole bathroom neat and shiny while being gentle on your skin. Citric acid and lactic acid are your powerful accomplices in the fight against lime, dirt and soap residues, leaving your sink, fittings and surfaces radiant and water-repellent.

**Application:**

Suitable for all acid-resistant surfaces in the bathroom, such as sinks, toilet bowls, bathtubs, showers, fittings and shower heads, among others.

**Note:**

- Do not use it on marble, limestone, anodized aluminium (Eloxal) or other surfaces that can be damaged by acids.
- We recommend using gloves while cleaning

|                 |         |         |
|-----------------|---------|---------|
| Available sizes | 500 ml  | 10 l    |
| Item no.        | 6609500 | 6609010 |





## CLEANING AGENTS



### GLASS & WINDOW CLEANER

Our Glass & Window Cleaner helps you get shiny, streak-free windows and glass surfaces that impress! It can be used on all waterproof surfaces, providing long-lasting brilliance. Due to its anti-static properties, your glass surfaces stay clean for longer, as our cleaner helps repel dust and dirt. What's more, it also makes your kid's fingerprints easier to remove from your window glass (and the telly).

#### Application:

- For streak-free window glass, window frames and sills, mirrors, and glass surfaces such as tables
- Also suitable for plastic or PVC surfaces, painted furniture, car consoles, phone displays, tablets as well as TV and computer monitors

**Note:** Do not use it on plasma TV monitors

**Good to know!** Our allrounder is also great for the car! It not only removes dirt from your window glass and car consoles, but you can also use it with your windshield wiper.

| Available sizes | 500 ml  | Refill Pack 500 ml | 20 l    |
|-----------------|---------|--------------------|---------|
| Item no.        | 8034500 | 8034499            | 8034020 |



### GLASS & SURFACES CLEANER

KLAR Glass & Surface Spray helps you get shiny, streak-free windows, mirrors and glass surfaces that impress! It can be used on all waterproof surfaces, providing long-lasting, brilliance. Due to its anti-static properties, your glass surfaces stay clean for longer, as our cleaner helps repel dust and dirt.

Not containing any harsh substances, our spray is also highly suited to clean TV and communication devices, such as phone displays, tablets as well as TV and computer monitors.

#### Application:

- For streak-free window glass, window frames and sills, mirrors, and glass surfaces such as tables
- Also suitable for plastic or PVC surfaces, painted furniture, car consoles, phone displays, tablets as well as TV and computer monitors

**Note:** Do not use it on plasma TV monitors

**Good to know!** Our allrounder is also great for the car! It not only removes dirt from your window glass and car consoles, but you can also use it with your windshield wiper.

| Available sizes | 500 ml  | 5 l     |
|-----------------|---------|---------|
| Item no.        | 6614500 | 6614005 |



## CLEANING AGENTS



LEMON



### HOUSEHOLD CLEANER

Our **one-fits-all-solution** to dirt at home. Whether it's the floor, furniture, doors or other surfaces, our household cleaner powerfully removes dirt, dust and fingerprints.

#### Application:

- Suitable for most waterproof surfaces at home, in the office or in your garage, such as furniture, floors, tiles, doors and more
- 500 ml are sufficient for 50 usages

| Available sizes | 500 ml  | 5 l     | 20 l    |
|-----------------|---------|---------|---------|
| Item no.        | 8030500 | 8030005 | 8030020 |



WITHOUT SCENT



### ALL PURPOSE CLEANER

The name says it all: a cleaner for all purposes, whether it's the tiles in your bathroom, your kitchen, the living room floor or your furniture. The only condition: your surfaces must be waterproof. The result: streak-free, deep cleanliness and a feel-good atmosphere!

**Application:** Dilute in water for a gentle cleaning of sealed, waterproof surfaces such as floors, kitchen and bathroom fronts, furniture, and ceramic tiles. Use in its concentrated form for especially tough cleaning tasks.

| Available sizes | 500 ml  | 10 l    |
|-----------------|---------|---------|
| Item no.        | 6608500 | 6608010 |







## CLEANING AGENTS



### WC CLEANERS

The AlmaWin and Klar WC cleaners powerfully remove stubborn dirt such as limescale, urine scale and deposits.

The powerful, viscous AlmaWin WC gel adheres particularly long and can therefore work especially well. The natural ultramarine blue color also helps with economical dosing.

**Application:** For hygienically clean, fresh toilets and urinals

**Note:** Please use sparingly

**Good to know:** When being faced with super tough cleaning tasks, let our gel soak overnight

#### Fragrance:

AlmaWin WC cleaner: Fresh lemon

AlmaWin WC Gel: Fresh, natural peppermint

|                                |         |
|--------------------------------|---------|
| Available size AW WC cleaner   | 750 ml  |
| Item no.                       | 8033750 |
| Available size Klar WC cleaner | 750 ml  |
| Item no.                       | 6610750 |
| Available size AW WC Gel       | 750 ml  |
| Item no.                       | 8011750 |



### GLASS CERAMIC COOKTOP CLEANER

Thanks to **natural mineral clay**, our special cleaner removes even the toughest stains from your glass and hob surfaces. The emulsion gently cleans without scratches, leaving a radiant shine. And the best part: the more often you polish your surfaces with our kitchen cleaner, the easier stains can be removed. Great results without much effort!

#### Application:

- Ideal for cleaning glass and hobs
- Can also be used to clean metal surfaces

**Note:** Please use sparingly

**Good to know:** For even better results, clean your burnt stove top with a special scraper

**Fragrance:** Fresh lavender; with a hint of lemon

|                |         |
|----------------|---------|
| Available size | 250 ml  |
| Item no.       | 8031250 |



## CLEANING AGENTS



### SCOURING MILK

Thanks to natural mineral clay, our scouring milk cleaner removes even the toughest stains in your kitchen and bathroom. The emulsion **gently cleans without scratches**, leaving a radiant shine. And the best part: the more often you polish your surfaces with our scouring milk, the easier stains can be removed. Great results without much effort!

#### Application:

- Ideal for cleaning IH, glass and electric hobs, (stainless) steel surfaces and kitchen sinks, as well as bathtubs and fittings
- Tough removal of stains and burns in pots and pans, as well as on enamel and metal surfaces
- Can also be used to clean your hands, removing paint and other stubborn dirt

**Note:** Please use sparingly

**Good to know:** For even better results, clean your burnt stove top with a special scraper

|                |         |
|----------------|---------|
| Available size | 500 ml  |
| Item no.       | 6611500 |



### FLOOR CLEANER

Our floor cleaner with soap from natural oil removes dirt and stain from your floors while nourishing their surface. Tile, stone, wood and PVC floors get a nice shine as well as a thin protective layer.

#### Application:

For your powerful yet gentle cleaning of

- floors and surfaces made of unglazed ceramic and rough stone
- linoleum and cork floors
- waxed, oiled or unsealed wooden floors
- PVC, CV or rubber floors

Also suitable for calcareous surfaces such as Marmor.

**Note:** Use KLAR Universal Cleaner for lacquered surfaces and laminate floors.

|                 |         |         |
|-----------------|---------|---------|
| Available sizes | 500 ml  | 5 l     |
| Item no.        | 6615500 | 6615005 |





## DISHWASHING DETERGENTS



### WASHING-UP LIQUIDS

AlmaWin and Klar turn washing up into a fragrance experience: Four fragrances made from natural essential oils bring variety to everyday life. Thanks to **wheat proteins, soap nut extract and particularly mild formulas**, the dishwashing products are gentle on the hands. The AlmaWin and Klar hand dishwashing products dissolve grease and dirt in a naturally powerful way, ensuring sparkling clean dishes.

**Application:** Helps you do the dishes with ease – and with a bit of fun. Suitable for all pots & pans, plates, chinaware, glasses and cutlery.

**Note:** Please use sparingly. Our concentrated formula removes even stubborn dirt with only some drops of detergent.

**Good to know:** Our washing-up liquide not only removes dirt from plates, but also fresh grease and oil stains from your clothes! Just dampen the stain and pour a small amount of detergent on it before putting it in the laundry. The fat-removing properties will do little wonders!

#### Fragrance:

AlmaWin Sea Buckthorn & Tangerine: Refreshing, yet soothing sea buckthorn and tangerine

AlmaWin Rose and Melissa: Soothing wild rose and Melissa

AlmaWin Lemongrass: Stimulating lemongrass

Klar Orange: subtle scent of fresh oranges

|  |         |         |         |         |
|--|---------|---------|---------|---------|
| Available sizes AW Sea Buckthorn & Tangerine | 500 ml  | 1 l     | 5 l     | 20 l    |
| Item no.                                     | 8510500 | 8510001 | 8510005 | 8510020 |
| Available sizes AW Lemongrass                | 500 ml  | 5 l     |         |         |
| Item no.                                     | 8020500 | 8020005 |         |         |
| Available sizes AW Rose and Melissa          | 100 ml  | 500 ml  | 1 l     |         |
| Item no.                                     | 8020100 | 8019500 | 8020001 |         |
| Available sizes Klar Orange                  | 500 ml  | 1,5 l   | 5 l     |         |
| Item no.                                     | 6621500 | 6621001 | 6621005 |         |



## DISHWASHING DETERGENTS



### WASHING-UP LIQUID SENSITIVE

Our KLAR Washing-up Liquid Sensitive is your powerful helper when dealing with your dishes. It helps you remove even greasy food with ease and leaves your dishes sparkling clean. The mild formula without fragrance is gentle on your skin, **preserving your hands' natural softness** and ensuring that everyone can enjoy this great product!

**Application:** Helps you do the dishes with ease – and with a bit of fun. Suitable for all pots & pans, plates, chinaware, glasses and cutlery.

**Note:** Please use sparingly. Our concentrated formula removes stubborn dirt even with some drops of detergent.

**Good to know:** Our dish soap not only removes dirt from plates, but also fresh grease and oil stains from your clothes! Just dampen the stain and pour a small amount of detergent on it before putting it in the laundry. The fat-removing properties will do little wonders!

|                 |         |         |         |
|-----------------|---------|---------|---------|
| Available sizes | 100 ml  | 500 ml  | 1 l     |
| Item no.        | 6622100 | 6622500 | 6622000 |
|                 | 1,5 l   | 5 l     |         |
|                 | 6622001 | 6622005 |         |







## DISHWASHING DETERGENTS

LEMON

WITHOUT SCENT



### DISHWASHER POWDER

Our Dishwasher Powder stands for powerful, **hygienic deep cleaning**. No matter whether you have to battle with grease, starch, protein, or coffee and fruit stains on your plates, our dishwasher powder with GMO-free enzymes, gets the job done! Due to its highly concentrated formula, the 1.250 kg package gets you going for 50 cycles.

#### Application:

- Suitable for all non-commercial dishwashers
- One box (1.250 kg) is sufficient for 50 dishwasher cycles
- For even better results, use together with AlmaWin Rinsing Aid and, in regular intervals, with AlmaWin Dishwasher Salt

#### Note:

- Not suitable for items made of aluminium, silver and wood
- Use your dishwasher in the right mode, according to your local water properties (soft/hard)

#### Good to know:

- For even whiter results or to treat stubborn stains on chinaware, such as from coffee, tea, tomato or carrot juice, use Oxygen Bleach.
- Running your dishwasher at high temperatures in regular intervals is not only more hygienic, but also supports a longer life-span of your machine.

|                         |          |         |
|-------------------------|----------|---------|
| Available sizes AlmaWin | 1.25 kg  | 2.8 kg  |
| Item no.                | 0190002  | 0190028 |
| Available sizes Klar    | 1.375 kg |         |
| Item no.                | 6617001  |         |



LEMON

WITHOUT SCENT



### DISHWASHER TABS

No more dirty dishes from too much (or too little) detergent. Our tabs always **guarantee the right dosage** and makes doing the dishes a breeze. Our powerful formula with GMO-free enzymes removes even stubborn dirt and **leaves a brilliant lasting shine** on your dishes and glasses.

#### Application:

- Suitable for all non-commercial dishwashers
- For even better results, use together with AlmaWin rinse and, in regular intervals, with AlmaWin dishwasher salt

#### Note:

- Not suitable for items made of aluminium, silver and wood
- Use your dishwasher in the right setting, according to your local water properties (soft/hard)

#### Good to know:

- Our tabs are not only for use in dishwashers! Leaving a tab, dissolved in water, on your baking tray overnight, helps you remove tough dirt, grease and stains from baked-in food.
- For stubborn stains on chinaware, such as from coffee, tea, tomato or carrot juice, use AlmaWin Oxygen Bleach for even whiter results.
- Running your dishwasher at high temperatures in regular intervals is not only more hygienic, but also supports a longer life-span of your machine

|                        |         |
|------------------------|---------|
| Available size AlmaWin | 25 tabs |
| Item no.               | 0101925 |
| Available sizes Klar   | 25 tabs |
| Item no.               | 6620500 |



## DISHWASHING DETERGENTS



OUR SMELL OF CLEANLINESS!





## DISHWASHING DETERGENTS



WITHOUT SCENT

### DISHWASHER SALT

For excellent cleaning results, your machine needs soft water with a low calcium carbonate content. Adding dishwasher salt in areas with hard water is **thus a lifesaver**, preventing white stains and lime deposits on your dishes and your machine. Get better results while protecting your machine with AlmaWin/Klar Dishwasher Salt!

#### Application:

- Suitable for all non-commercial dishwashers
- Using a combination of AlmaWin/Klar dishwasher salt, dishwasher tabs/powder and rinse aid guarantees sparkling clean dishes with a brilliant shine

#### Note:

- Use your dishwasher in the right setting, according to your local water properties (soft/hard)

|                        |         |
|------------------------|---------|
| Available size AlmaWin | 2 kg    |
| Item no.               | 4101120 |
| Available size Klar    | 2 kg    |
| Item no.               | 6619002 |



WITHOUT SCENT

### RINSING AGENT

Our rinse aid stands for streak free, shiny glasses and dishes. Helping your machine dry your glasses, plates and cutlery evenly, ugly streaks, water drops and lime stains are a thing of the past!

#### Application:

- Suitable for all non-commercial dishwashers
- Don't skip the rinse aid anymore! Together with AlmaWin/Klar dishwasher powder/tabs and dishwasher salt, it gets the sparkle back on your plates. Sparkling clean glasses to impress!

#### Note:

- Not suitable for items made of aluminium, silver and wood
- In the unlikely case you still find the occasional water drop or lime stains on your glasses and cutlery, increase the dosage of your rinse aid.
- Use your dishwasher according to your producer's instructions
- Use your dishwasher in the right setting, according to your local water properties (soft/hard)
- Your AlmaWin/Klar Rinse Aid can also help you remove stubborn lime stains from vases

|                        |         |
|------------------------|---------|
| Available size AlmaWin | 500 ml  |
| Item no.               | 8021500 |
| Available size Klar    | 500 ml  |
| Item no.               | 6618500 |



## SOAPS



LEMON



WITHOUT SCENT

### CURD SOAP

Made from **purely natural vegetable oils** and other carefully selected natural ingredients, our curd soap helps you remove dirt and stains from a diverse range of textiles. Due to its **alkaline properties**, it supports your skin's pH value and natural balance, making it ideal for your daily body care as well as for washing all the germs and dirt off your hands.

#### Application:

- Ideal for gentle body care and handwashing
- Can also be used to pre-treat tough stains on textiles

#### Good to know:

Our curd soap is idea to refill your AlmaWin magic dream sponge

#### Fragrance:

AlmaWin Curd Soap: Hint of lemon

|                        |         |
|------------------------|---------|
| Available size AlmaWin | 100 g   |
| Item no.               | 8037100 |
| Available size Klar    | 100 g   |
| Item no.               | 6624100 |



WITHOUT SCENT

### SOAPNUT SOAP

Soapnuts have been used in ayurvedic medicine to cleanse and treat sensitive skin. Its nourishing components prevent dryness of your skin, and its antimicrobial properties have traditionally been used to cure bacterial infections and eczema.

We have combined the best of two world – traditional Indian soapnut with carefully selected European vegetable oils – to provide you with a fragrance-free soap bar that can help you get **healthy and glowing skin**. We believe it's the perfect solution for your daily body care, suitable even for people with sensitive skin and allergies.

**Application:** For your gentle body care and hand washing.

|                |         |
|----------------|---------|
| Available size | 100 g   |
| Item no.       | 6623100 |







## SOAPS



WITHOUT SCENT

### WASHING FOAM SOAPNUT

Our KLAR foamy handwash is particularly gentle on the skin. Our special formula with soap nut, wheat protein and organic herbal extracts **not only cleanses your hands, but also moisturises** them, thereby protecting your skin's natural pH value.

#### Application:

Ideal for your daily handwash routine. Also suitable for people with allergies, skin rashes and eczema.

|                |         |
|----------------|---------|
| Available size | 240 ml  |
| Item no.       | 6625240 |



## ADDITIONAL PRODUCTS



### MEASURING CUP/SPOON

Never too much, never too little. The fine scaling on our measuring cup and spoon makes sure you always put the correct amount of detergent (powder & liquid). Good for the environment, your clothes, floors and appliances, and your wallet! Both the 150 ml cup and the 25 ml spoon are made from PP and are thus recyclable.

|                      |         |
|----------------------|---------|
| Available size Cup   | 150 ml  |
| Item no.             | K800510 |
| Available size Spoon | 25 ml   |
| Item no.             | K800511 |



### TAP FOR CANISTERS

For our 5 l, 10 l and 20 l canisters, for easy dosage and a spill-free refill of your smaller bottles and containers. To pour into your desired object, put the canister on its side and open the tap.

Available size: 1 piece



### DOSAGE AND REFILL PUMP

For easy dosage and a spill-free refill of your smaller KLAR bottles and containers from 5 l and 10 l canisters. The large pump releases 100 ml (and is thus ideal for refilling bottles) while one push from the smaller pump provides you with 30 ml, making it ideal for a quick, hassle-free dosage of your liquid washing detergent.

Available size: 1 piece

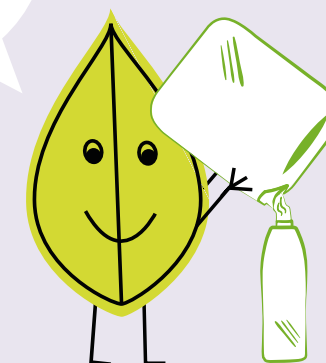
## ADDITIONAL PRODUCTS



### ALMAWIN UNPACKED: REFILLING MADE EASY

For even more sustainability in terms of packaging, we offer AlmaWin and Klar products in 5 l, 10 l or 20 l canisters. This makes refilling, safe and easy.

REFILL  
AND SAVE  
PLASTIC











OUR GUIDE TO DOING THE LAUNDRY

- 1


Separate your clothes (e.g. into whites, darks, delicates, wool, hand wash etc.). Always select a suitable wash cycle/programme and temperature
- 2

Pre-treat or remove stubborn stains. Fresh stains are much easier to combat than old ones!
- 3

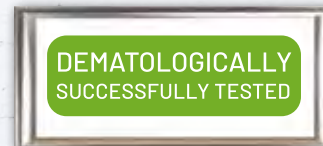
Use the right detergent (p. 10) at the right amount (too much, as well as using too little, has adverse effects). You can find instructions on the right dosage on our products

|   |  |
|---|--|
|    | Garment not suitable for machine washing. Dry cleaning only.                       |
|    | Handwash or hand wash programme of your machine, if applicable.                    |
|    | Regular cycle in the washing machine at the temperature state.                     |
|    | Delicates or special care programme at the temperature stated; low spin speed.     |
|    | Wool or delicates programme. Only low spin speeds may be used.                     |
|  | Suitable for both chlorine and oxygen bleaching. Heavy-duty detergent may be used. |
|  | Suitable only for oxygen bleach.   |
|  | No bleaching allowed. Use detergents containing bleach with care.                  |

OUR GUIDE TO PICKING THE RIGHT DETERGENT

|  |                          |                                     |                                   |                         |  |                          |                               |                               |  |
|--|--------------------------|-------------------------------------|-----------------------------------|-------------------------|--|--------------------------|-------------------------------|-------------------------------|--|
| <br><br>If heavily soiled, as well as to kill germs, wash clothes that can be washed at high temperatures at 90 °C. A 90 °C wash at regular intervals helps you keep your washing machine clean and prevents foul odours. | Cleanut Liquid Detergent | AlmaWin/Klar Liquid Detergent COLOR | AlmaWin/Klar Washing Powder COLOR | AlmaWin Sport & Outdoor | AlmaWin/Klar Washing Powder Heavy Duty Detergent | AlmaWin Liquid Detergent | Klar Universal Soapnut Liquid | Liquid Laundry Dark and Black | AlmaWin Wool & Silk Liquid Detergent // Klar Fine Fabric & Wool Liquid Detergent |
| TEMPERATURES   | 20 °C–60 °C              | 30 °C–60 °C                         | 30 °C–60 °C                       | 20 °C–40 °C             | 30 °C–95 °C                                      | 30 °C–95 °C              | 20 °C–95 °C                   | 20 °C–60 °C                   | 20 °C–40 °C  |
| Delicates, e.g. viscose, synthetic fibres, lingerie, blouses. Delicates cycle at the stated temperature, low spin speed.   | X                        |                                     |                                   |                         |  |                          | X                             |                               | X  |
| Coloureds (regular), e.g. cotton, linen, mixed fabrics, jeans, coloured towels. Regular programme at the stated temperature.   | X                        | X                                   | X                                 |                         |  | X                        | X                             | X                             |  |
| Coloureds (easy care), e.g. cotton, linen, hemp, mixed fabrics, trousers, shirts, skirts. Easy care programme  | X                        | X                                   | X                                 |                         |  | X                        | X                             | X                             |  |
| Functional wear, outdoor clothing, smelly textiles, e.g. sportswear, swimwear, animal textiles. Wool or outdoor gear, programme at the temperature stated; very low spin speed only.   |                          |                                     |                                   | X                       |  |                          |                               |                               |  |
| Whites, colourfast fabrics, heavily soiled laundry, e.g. bed-sheets, tablecloths, towels. Regular programme setting at the stated temperature.   |                          |                                     |                                   |                         | X  | X                        | X                             |                               |  |
| Woollens, silks and delicates, e.g. batiste and bourette silk. Wool or delicates programme at the temperature stated; very low spin speed only   |                          |                                     |                                   |                         |  |                          |                               |                               | X  |
| Darks, blacks or dark jeans. Regular programme at the stated temperature.  |                          |                                     |                                   |                         |  |                          | X                             | X                             |  |





FOR YOU



Natural Detergent certified by ECOCERT Greenlife according to the ECOCERT standard available at <http://detergents.ecocert.com/en>

Ecogarantie®: Product certified by Certisys. sprl, [www.ecogarantie.eu](http://www.ecogarantie.eu)



Druckerzeugnis  
[www.natureoffice.com/DE-275-KQMAMGY](http://www.natureoffice.com/DE-275-KQMAMGY)  
**klimaneutral**  
durch CO<sub>2</sub>-Ausgleich



**AlmaWin Reinigungskonzentrate GmbH** • Talstraße 2 • D-73650 Winterbach  
T: +49 7181 47 09 22 00 • F: +49 7181 47 09 24 00 • [info@almawin.de](mailto:info@almawin.de) • [www.almawin.de](http://www.almawin.de)

Art.-Nr.: 4300014

12/2021